



## Goth xp rg65 boat and parts

MS 1000-2000 Hull and parts

MS 1200    Goth XP MSE hull (Molinea Sails Edition).....125.- EUR  
New mould technology (high pressure ballon technic)  
72 +/- 2g

MS 1001    Original Goth XP hull .....Discontinued  
MS 1002    cnc machined carbon deck, bow and front .....Discontinued

MS1202    cnc machined bow , front , servo holder and hull reinforcement.....16.- EUR

- Carbon, glass, Airex sandwich
- CNC machined

MS 1003    Rubber bumper original Goth xp.....8.- EUR

MS 1203    Rubber bumper Goth xp MSE.....8.- EUR  
- 2K Silikon rubber (SH40)  
- transparent, white or black

MS 1004 carbon reinforced glass fiber ring with pringles cup.....12.-EUR

- dia.78mm
- Pringles chips cap
- glass fiber with carbon rowing



MS 1005 carbon moulded trunking.....4 .- EUR

- Lenght 40mm
- compatible MS 1006



MS 1006 rudder arm.....1,50.- EUR

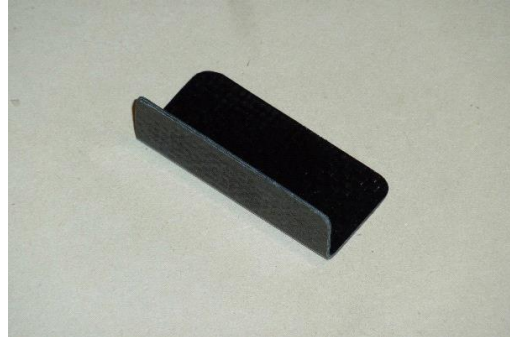


MS 1007 CNC machined rudder servo holder.....6.-EUR

- Carbon, glass, Airex sandwich
- CNC machined
- servo hole 12,5x24,5  
(recommended standard micro servo size)



MS 1008 Carbon sail servo holder.....5.-EUR



MS 1009 mast bearing holder .....11.-EUR

- with ballbearing (6x10x3 flanged)
- CNC machined carbon plate



MS 1012 Teflon mast Bracket .....3.- EUR

- CNC machined
- teflon and glass fiber
- 2mm holes



MS 1014 Carbon sail servo arm with Dragon.Force roller block.....8.- EUR

- CNC machined
- stainless steel M2 threaded
- lenght 55mm



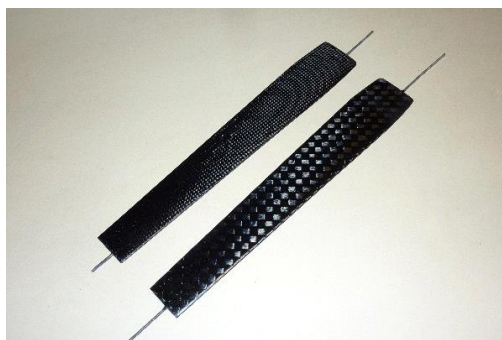
- MS 1100    Goth XP completed assembled hull with CNC machined parts.....Discontinued  
and standard foil kit (sloop and swing rig system, with 600g bulb)
  
- MS 1101    Goth XP completed assembled hull with CNC machined parts.....Discontinued  
and standard foil kit (only swing rig system, with 600g bulb)
  
- MS 1300    Goth XP MSE completed assembled hull with CNC machined parts.....410.- EUR  
and standard foil kit (sloop and swing rig system, with 715g bulb)
  
- MS 1301    Goth XP MSE completed assembled hull with CNC machined parts.....390.- EUR  
and standard foil kit (only swing rig system, with 715 bulb)

MS 2000 - 3000    foil kit and parts

- MS 2010    fin 3x3 mm carbon .....55.-EUR
- MS 2011    fin 10x10mm carbon.....55.-EUR

New steel mold tool!!!

- High streng carbon layers
- CNC machined XPS foam core
- stainles steel threaded rod upper (M3)
- weight: 48g (+ / - 2g)
- length: 370mm
- width: from above to down 50mm-58mm-38mm
- thicknes: above 4,5-4,7mm – down 2,8-3mm



MS 2012 fin TEXTREM edition.....75.-EUR

- lighter and stiffer version
- High modulus UD and TEXTREM carbon layers
- CNC machined XPS foam core
- stainles steel threaded rod upper (M3)
- weight: 38g (+ / - 1g)
- length: 370mm
- width: from above to down 50mm-58mm-38mm
- thicknes: above 4,5-4,7mm – down 2,8-3mm



MS 2021 carbon fin box.....20.- EUR

New steel mould tool

- carbon and glass fiber layer
- extra water closed layer
- weight: 12 (+/- 1g)
- only carbon edition

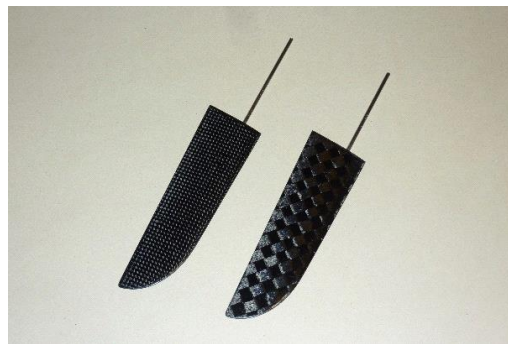


MS 2030 rudder 3x3 mm carbon.....25.-EUR

MS 2031 rudder 10x10 mm carbon.....25.-EUR

New steel mould tool

- high streng carbon layers
- Cnc machined xps foam core
- 3mm steinles steel shaft
- weight with shaft 13 +/- 1g
- length: 150mm
- Width: up - down : 48mm-32mm
- thickness: (upper) 3,3mm



MS 2031 rudder TEXTREM edition.....30.- EUR

- High modulus UD and TEXTREM carbon layers
- Cnc machined xps foam core
- 3mm TITANIUM shaft
- weight with shaft 9 +/- 1g
- length: 150mm
- Width: up - down : 48mm-32mm
- thickness: (upper) 3,3mm



MS 2041 bulb 425g (copper core).....25.-EUR

- Pure lead
- 3mm copper core reinforcement
- weight +/-5g

MS 2060 bulb 515g (copper core).....25.-EUR

- Pure lead
- 3mm copper core reinforcement
- weight +/-5g

MS 2070 bulb 615g (copper core).....25.-EUR

- Pure lead
- 3mm copper core reinforcement
- weight +/-5g

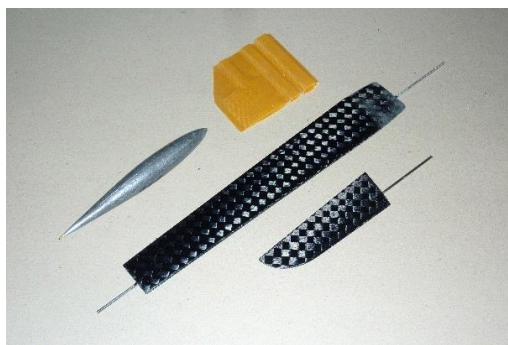
MS 2080 bulb 715g (copper core).....25.-EUR

- Pure lead
- 3mm copper core reinforcement
- weight +/-5g

MS 2100 Foil kit .....100.- EUR

complete foil kit

- fin (available pattern)
- rudder (available pattern)
- fin box
- bulb free selectable four tip



MS 2101 TEXTREM edition foil kit .....130.- EUR

- TEXTREM fin
- TEXTREM rudder
- new carbon fin box
- 425g, 515g, 615g or 715g bulb
- complet kit lighter 15g



MS 3000 -4000 Rigs and sails

MS 3010 full complete Swing A rig and sail (skyshark 5 pt pultruded, tapered mast).....110.- EUR

MS 3011 full complete Swing A rig and sail (pultruded mast) .....100.- EUR

MS 3012 A Swing rig kit with skyshark mast and sail .....90.- EUR

MS 3013 A Swing rig kit without mast and sail.....40.-EUR

MS 3020 full complete Swing A+ rig and sail (skyshark 7 pt pultruded, tapered mast)..110.- EUR

MS 3021 full complete Swing A+ rig and sail (pultruded mast).....100.- EUR

MS 3022 A+ Swing rig kit with skyshark mast and sail .....90.- EUR

MS 3023 A+ Swing rig kit without mast and sail.....40.-EUR

MS 3030 full complete Swing B rig and sail (skyshark 7 pt pultruded, tapered mast).....110.- EUR

MS 3031 full complete Swing B rig and sail (pultruded mast).....100.- EUR

MS 3032 B Swing rig kit with skyshark mast and sail .....90.- EUR

MS 3033 B Swing rig kit without mast and sail.....40.-EUR

MS 3040 full complete Swing C rig and sail (skyshark 7 pt pultruded, tapered mast).....110.- EUR

MS 3041 full complete Swing C rig and sail (pultruded mast)..... 100.- EUR

MS 3042 C Swing rig kit with skyshark mast and sail .....90.- EUR

MS 3043 C Swing rig kit without mast and sail.....40.-EUR

MS 3050 full complete sloop A rig and sail (skyshark 7 pt pulthured, tapered mast).....115.- EUR

MS 3051 full complete sloop A rig and sail (pultruded, mast).....105.- EUR

MS 3052 A sloop rig kit with skyshark mast and sail .....95.- EUR

MS 3053 A sloop rig kit without mast and sail.....45.-EUR

MS 3060 full complete sloop B rig and sail (skyshark 7 pt pultruded, tapered mast)....115.- EUR

MS 3061 full complete sloop B rig and sail (pultruded mast).....105.- EUR

MS 3062 B sloop rig kit with skyshark mast and sail .....95.- EUR

MS 3063 B sloop rig kit without mast and sail.....45.-EUR

MS 3070 full complete sloop C rig and sail (skyshark 7 pt pultruded, tapered mast).....115.- EUR

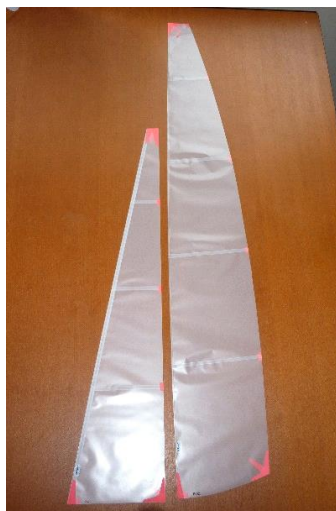
MS 3071 full complete sloop C rig and sail (pultruded mast).....105.- EUR

MS 3072 C sloop rig kit with skyshark mast and sail .....95.- EUR

MS 3073 C sloop rig kit without mast and sail.....45.-EUR

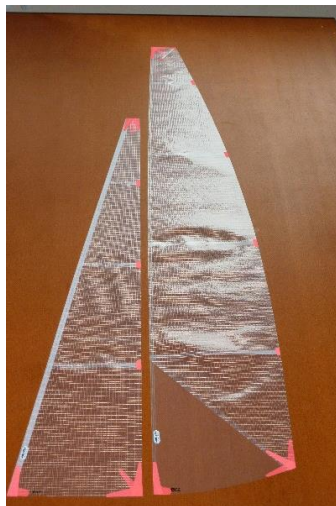
MS 3100 Swing A sail.....35.-EUR

- 23micron mylar foil



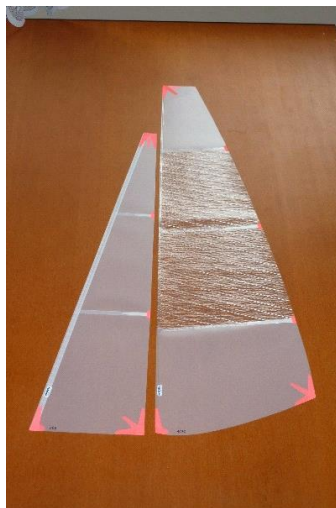
MS 3101 Swing A+ sail.....35.- EUR

- 36 micron mylar foil



MS 3102 Swing B sail.....35.- EUR

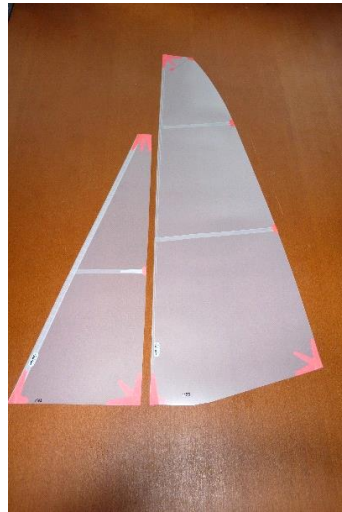
- 50 micron mylar foil





MS 3103 Swing C sail.....35.- EUR

- 75 micron mylar foil



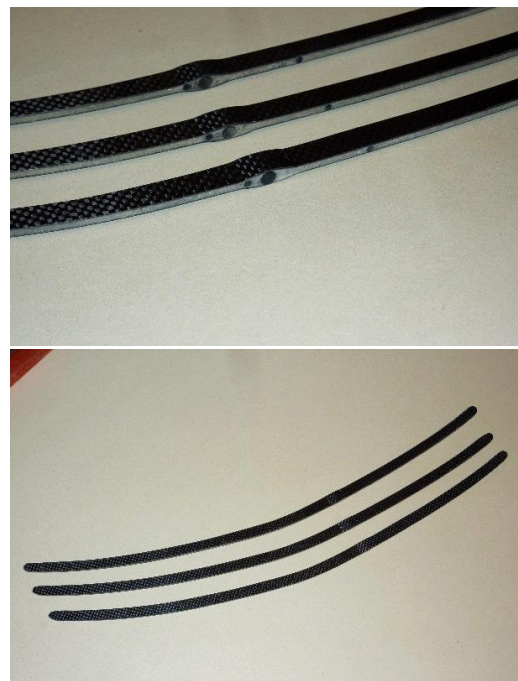
MS 3111 Sloop sail A original goth xp shape 36 micron mylar.....35.- EUR

MS 3112 Sloop sail B original Goth xp shape 50 micron mylar.....35.- EUR

MS 3113 Sloop sail C original Goth xp shape 75 micron mylar.....35.- EUR

MS 3300 Swing rig boom( 1 pcs.) .....16.-EUR

- Carbon herex sandwich
- weight: 10g
- CNC machined
- 11,5x3,5mm



MS 3303 mast ring carbon.....2.- EUR

MS 3400 mast crane 90 mm (ø 6 mm).....5.-EUR

MS 3401 mast creane 60 mm (ø 5 mm).....5.-EUR



MS 3402 mast band with flange (ø 4 mm).....4.- EUR

MS 3403 mast band with flange (ø 5 mm).....4.- EUR

MS 3404 mast band with flange (ø 6 mm).....4.- EUR



MS 3405 ball raced head fitting (with 2pcs. 5x8x2,5mm flanged bearing).....8.-EUR



MS 3500 ball raced gooseneck (ø 8 mm whitouth bearing).....5.-EUR  
 MS 3501ball raced gooseneck (ø 10 mm withouth bearing).....5.-EUR



MS 3502 5\*8\*2,5mm flanged bearing.....1,20.- EUR  
 MS 3503 6\*10\*3mm flanged bearing.....1,20.-EUR

MS 3504 ALU turnbuckle...40mm.....1,70.-EUR

MS 3510 sloop rig jib boom (complete).....12.- EUR



MS 3511 boom ring ø 4 mm (5pcs.).....4.-EUR



MS 3520 sloop rig main boom (complete with bearing 5 mm mast).....16.-EUR  
 MS 3521 sloop rig main boom (complete with bearing 6 mm mast).....16.-EUR

